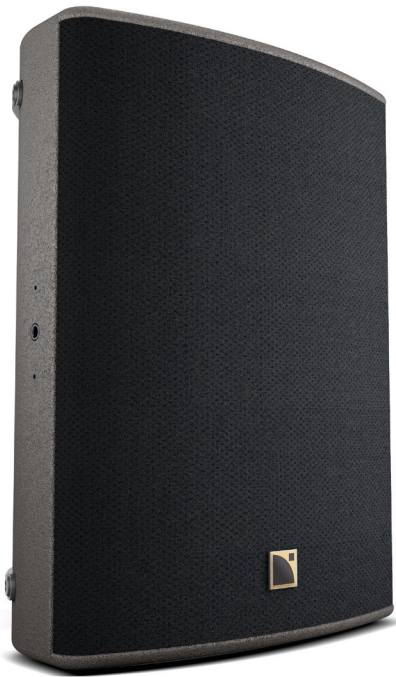


X15 HiQ REFERENCE STAGE MONITOR



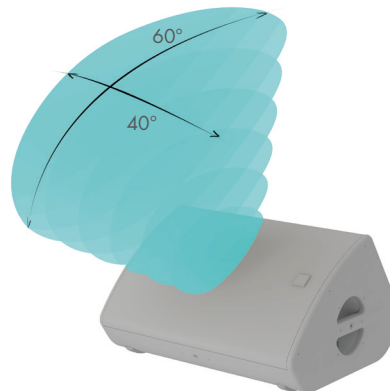
ELECTRO-ACOUSTICS



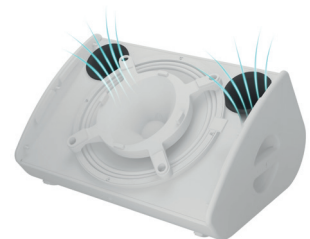
The X15 HiQ is an active coaxial system designed as a reference stage monitor. The enclosure features a 3" diaphragm compression driver coaxially-loaded by a 15" low frequency transducer in a bass-reflex cabinet. The L-Vents laminar vented ports reduce turbulence and port noise at high levels to increase LF efficiency.

The X15 HiQ operates from 55 Hz to 20 kHz. The coaxial transducer arrangement and its ellipsoid waveguide produce a 40° x 60° directivity pattern with a smooth tonal response free of secondary lobes over the entire frequency range. As a result, X15 HiQ boasts an exceptional immunity to feedback.

The L-Acoustics amplified controllers ensure the advanced crossover functions, time alignment, linearization and L-Drive protection of the transducers.



Ellipsoid directivity



L-Vents laminar vented ports

PHYSICAL

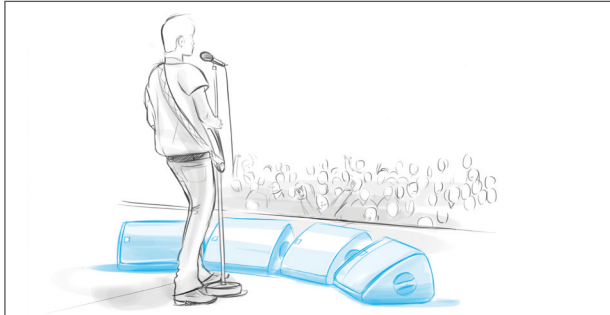
With a cabinet combining the properties of birch and beech plywood, X15 HiQ weighs a mere 21 kg and features ergonomic handles for a solid grip and efficient handling. Its elegance and ultra-low profile make for an easy integration into the set. It provides a stage monitoring angle setting of 35° with regard to vertical or 55° thanks to its built-in risers. For special narrow fill applications, the X15 HiQ can be pole-mounted using the integrated socket or flown and tilted in various orientations using its rigging accessories.



Dual stage monitoring angle - built-in risers

APPLICATIONS AND BENEFITS

The X15 HiQ combines all the qualities of a reference stage monitor. It offers power (SPL) in beamwidth, an excellent acoustic isolation with its narrow ellipsoid directivity of 40° x 60°, a high immunity to feedback, an ultra-low profile and low weight for integration and handling, a rugged build and an active design with low latency preset. In addition, sound designers can take advantage of its directivity for narrow fill applications.



Stage monitor



Narrow fills

RIGGING

The X15 HiQ can be pole-mounted using the integrated socket. Other deployments such as wall-mounted, ceiling-mounted or flown are quick and easy, with a complete range of rigging accessories that offer multiple set-up options and various orientations.

X-UL15
Long U-bracket for X15 HiQ

Wall or ceiling mounts

X-UTILT
U-bracket*

Wall mount

Pole mount socket

X-US1215
Short U-bracket for X15 HiQ

Wall or ceiling mounts

Wall mount

* wall mount with tilt adjustment

CLAMP250
Clamp certified for 250 kg

Flown with X-BAR

X-BAR
Rigging bar

Vertical or horizontal - 10 angulations

EMBi
Pole mount socket

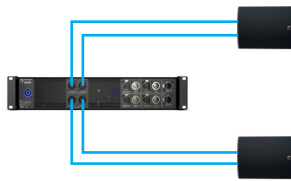
With X-US1215

AMPLIFIED CONTROLLERS

LA4X: amplified controller with DSP



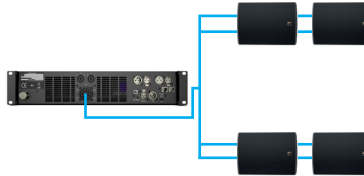
4 x 1000 W / 8 ohms or 4 ohms
4 inputs x 4 outputs architecture
Max 2 enclosures per amplified controller



LA8: amplified controller with DSP



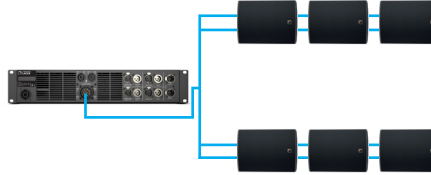
4 x 1800 W / 4 ohms or 2.7 ohms
2 inputs x 4 outputs architecture
Max 4 enclosures per amplified controller



LA12X: amplified controller with DSP



4 x 3300 W / 2.7 ohms
4 inputs x 4 outputs architecture
Max 6 enclosures per amplified controller



LA-RAK: touring rack containing three LA8, with power, audio and network distribution



SUBWOOFERS

SB18(i/m): compact subwoofer (1x18")



System bandwidth: 32 Hz - 20 kHz
Contour reinforced by 8 dB at 100 Hz
Ratio of one SB18 to one X15 HiQ



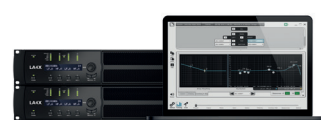
SOFTWARE

SOUNDVISION: simulation software



3D electro-acoustic & mechanical simulation software

LA Network Manager: control & monitoring software



Real-time control and monitoring up to 253 units
Multiple network topologies

X series: a complete range for professional sound reinforcement



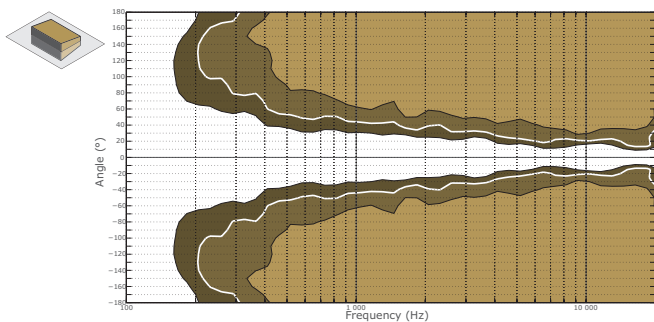
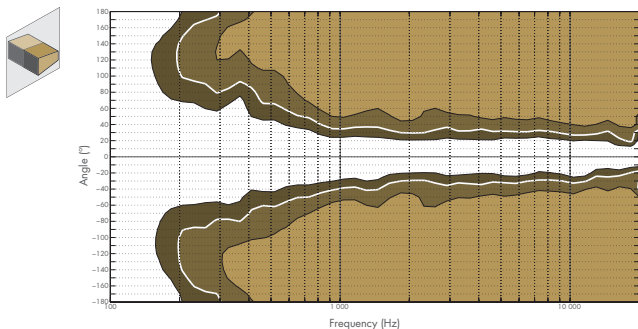
The X Series comprise four coaxial enclosures with distinct formats, bandwidth, SPL and coverage angles adapted to short throw applications in rental productions and fixed installations. With studio monitor sound quality, the X Series convey a natural and transparent sound. Coaxial technology allows for a compact design and constant tonal balance over distance, giving the X Series smooth coverage for off-axis audiences, no minimum listening distance and high feedback rejection.

SPECIFICATIONS

Description	Active 2-way coaxial enclosure, controlled and amplified by LA4X / LA8
Usable bandwidth (-10 dB)	55 Hz - 20 kHz ([X15] preset)
Maximum SPL¹	138 dB ([X15] preset)
Nominal directivity	Vertical: 60° Horizontal: 40°
Monitoring angle²	35° without risers 55° with risers
Transducers	LF: 1 × 15" neodymium, bass-reflex, laminar vents HF: 1 × 3" neodymium compression driver, ellipsoid waveguide
Nominal impedance	LF: 8 Ω HF: 8 Ω
Connectors	IN: SpeakON® LINK: SpeakON®
Rigging and handling	2 × handles DIN580-compatible M8 threaded insert 4 × M10 threaded inserts 2 × 35 mm pole sockets
Weight (net)	21 kg / 46.2 lb
Cabinet	First grade Baltic birch and beech plywood
Finish	Dark grey brown Pantone® 426C Custom RAL® code on special order
IP	IP43

1- Peak level at 1 m under free field conditions using pink noise with crest factor 4 (preset specified in brackets).
2- With regard to vertical.

BEAMWIDTH



► Dispersion angle diagram of a single X15 HiQ in vertical (top) and horizontal (bottom) plane using lines of equal sound pressure at -3 dB, -6 dB, -12 dB.

DIMENSIONS

